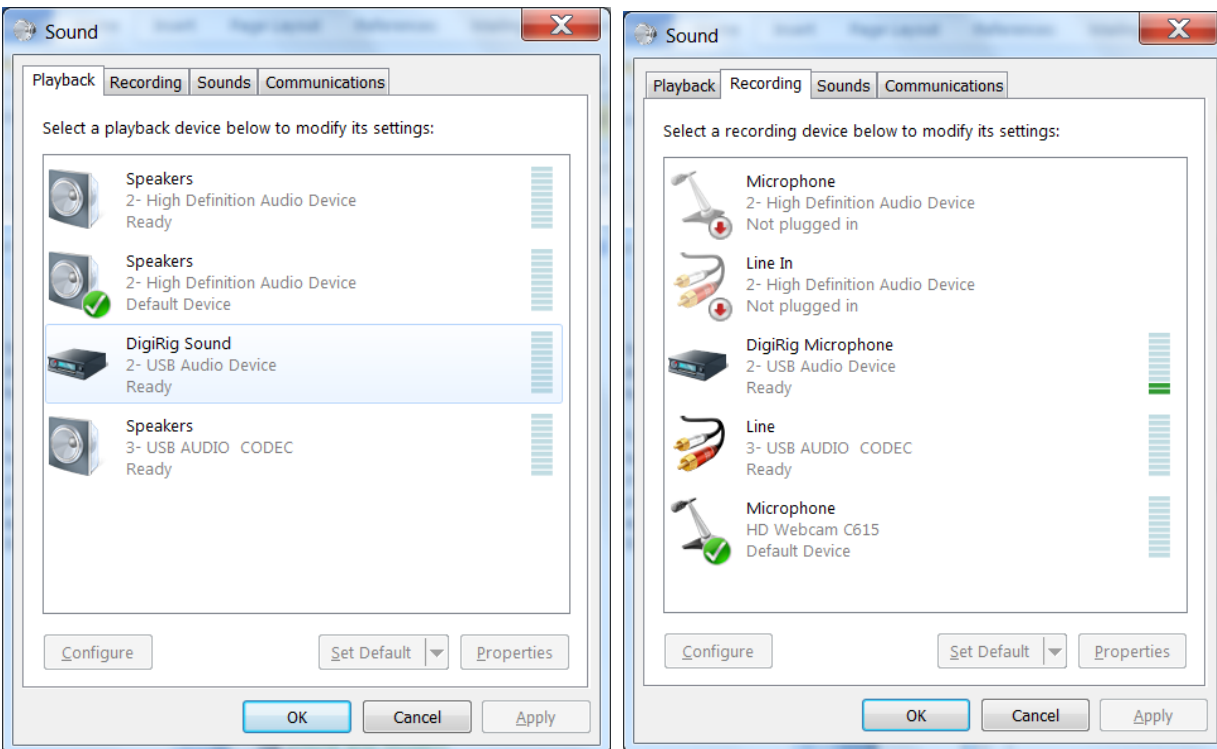
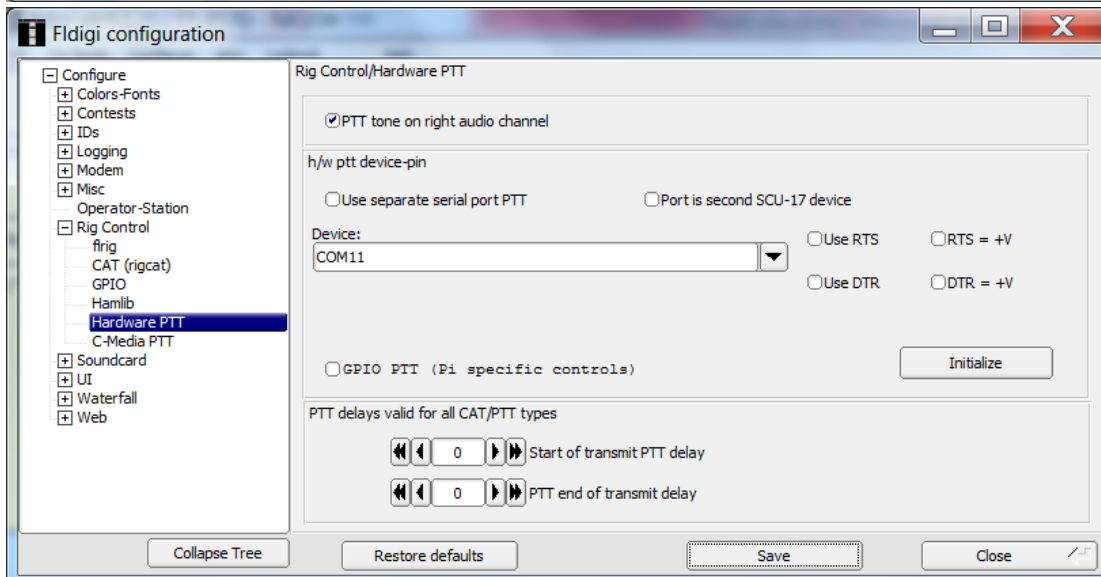
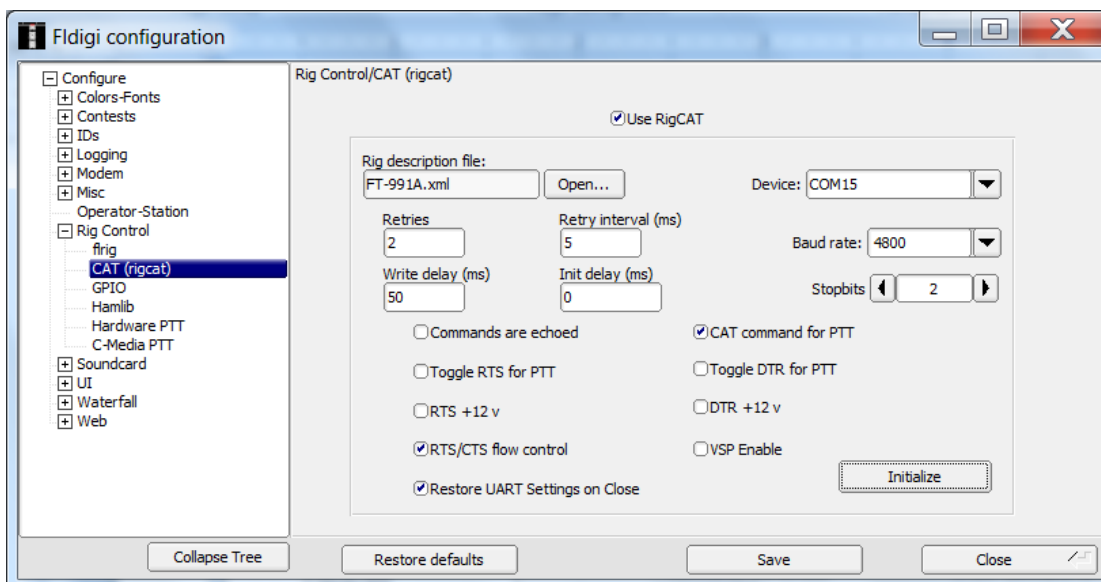
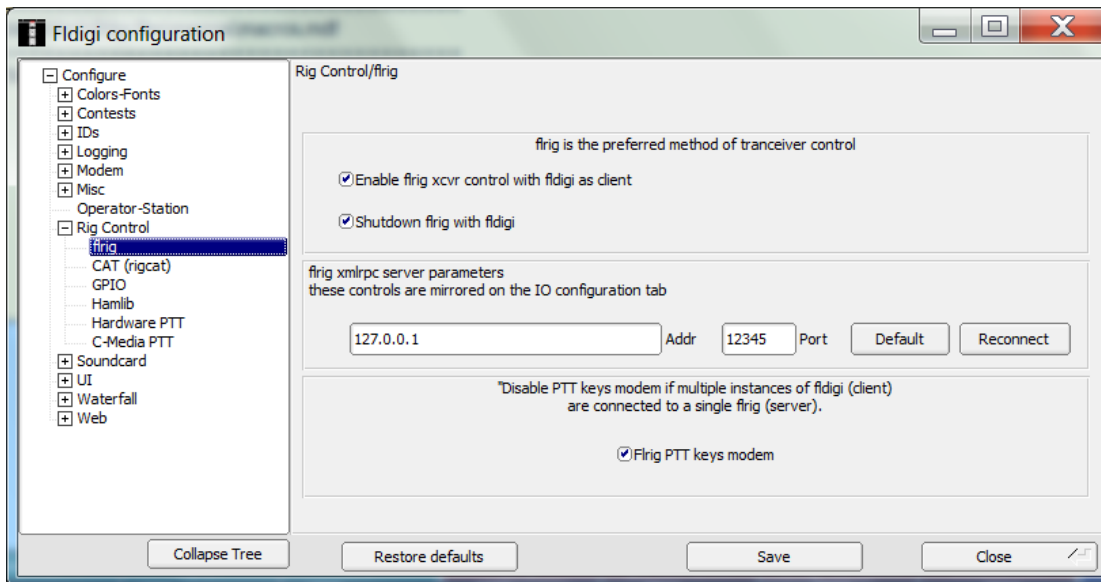


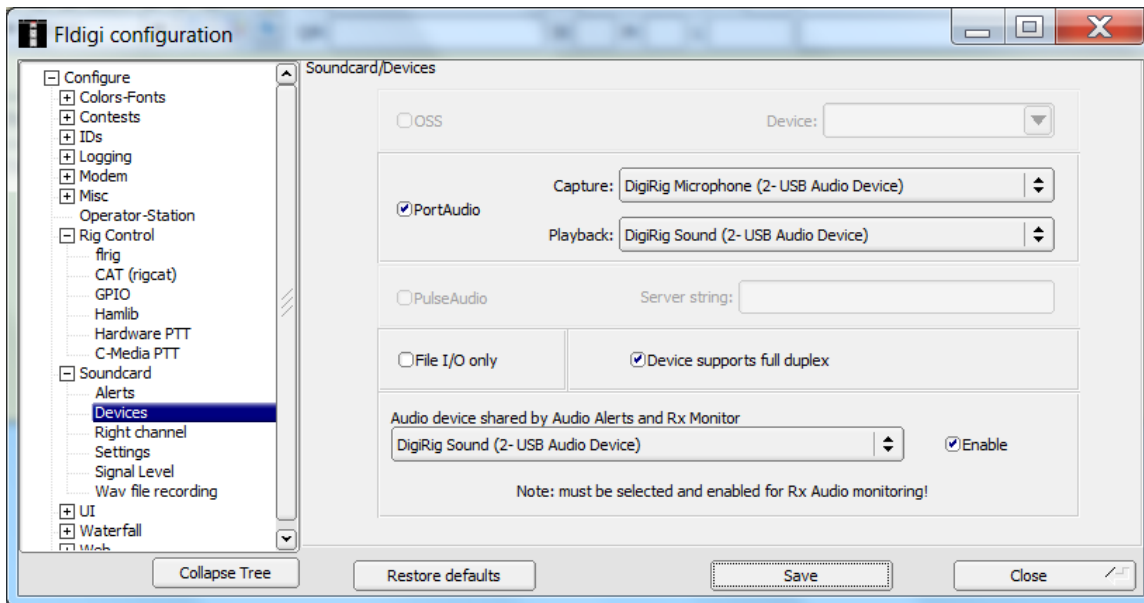
The highlighted USB Audio Device is DigiRig, it disappears when I unplug the DigiRig USB from the PC.



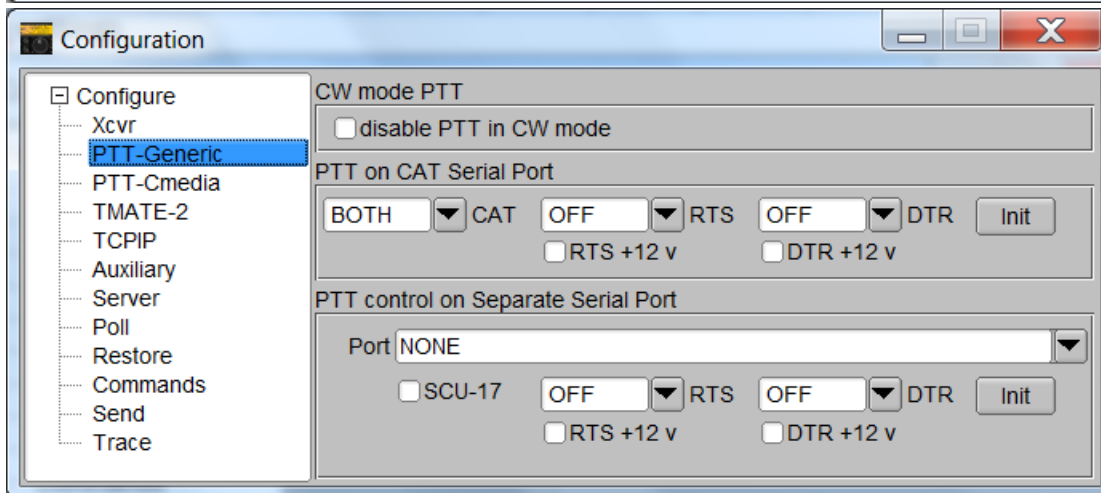
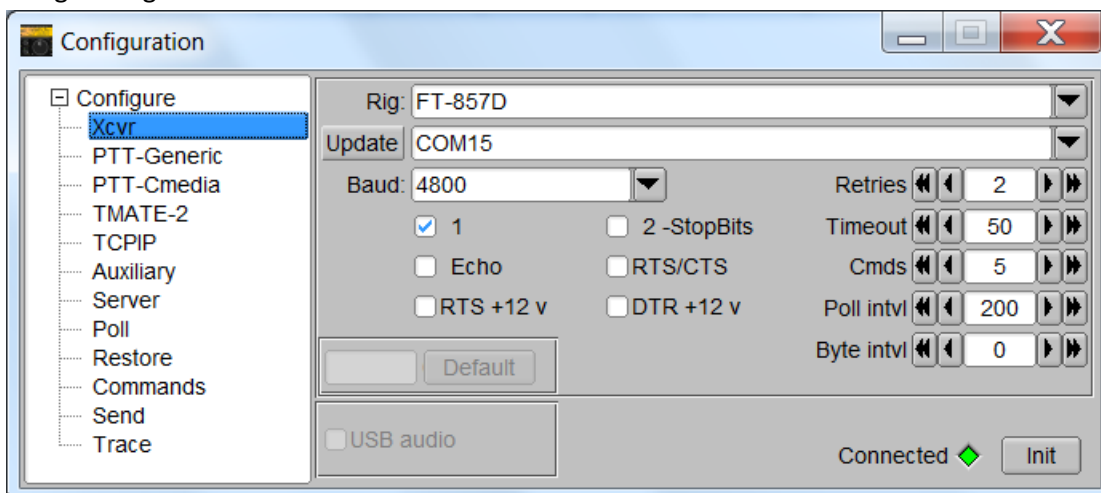
I note that there seems to be some signal coming in on the DigiRig Mic, when I unplug the audio connection on the back of the radio, that sound goes away. This is also backed up because I see the waterfall on FLDigi showing signals

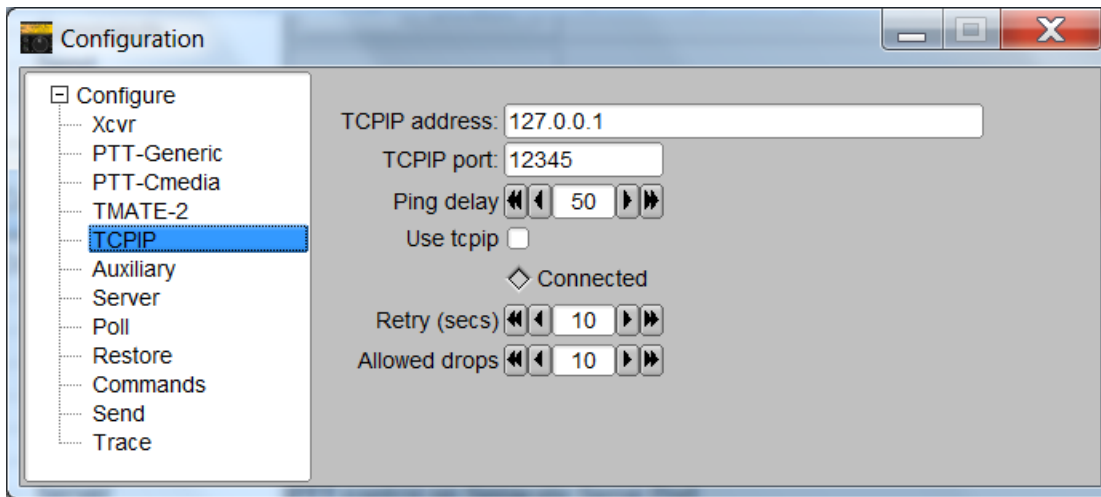


Setting in FLDigi that enabled waterfall to display incoming RF.



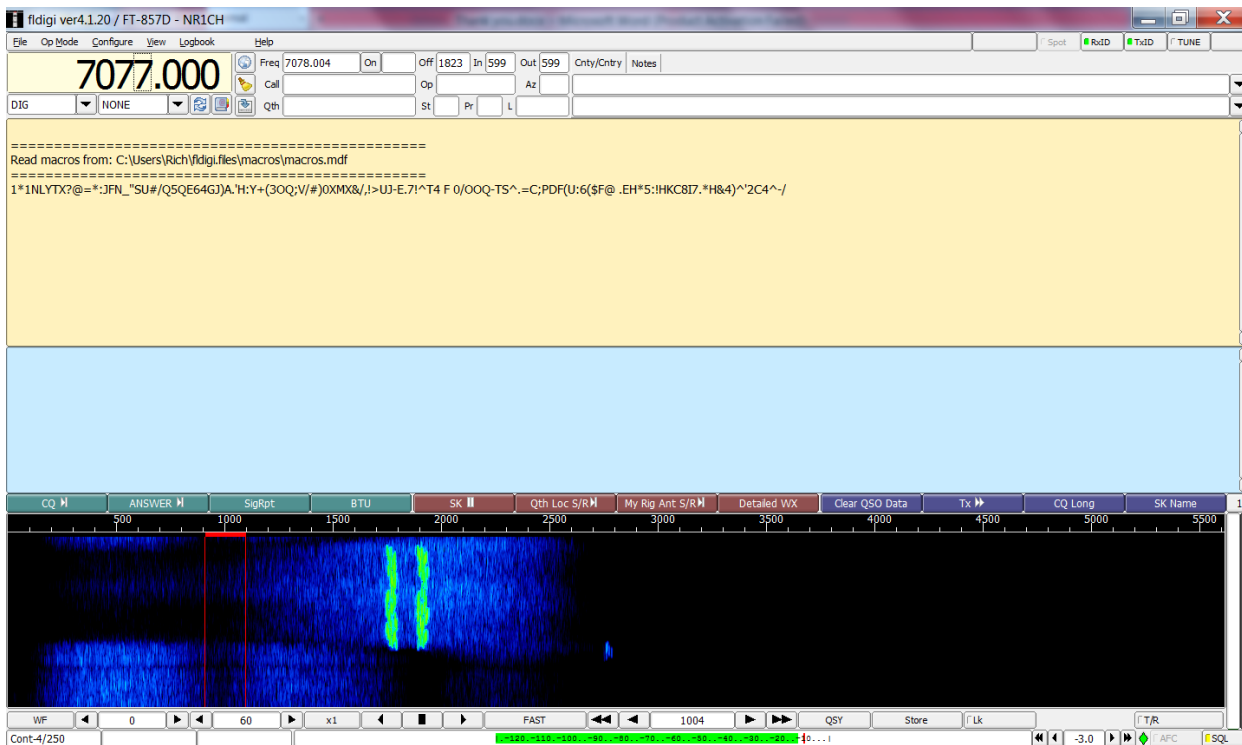
FLRig settings



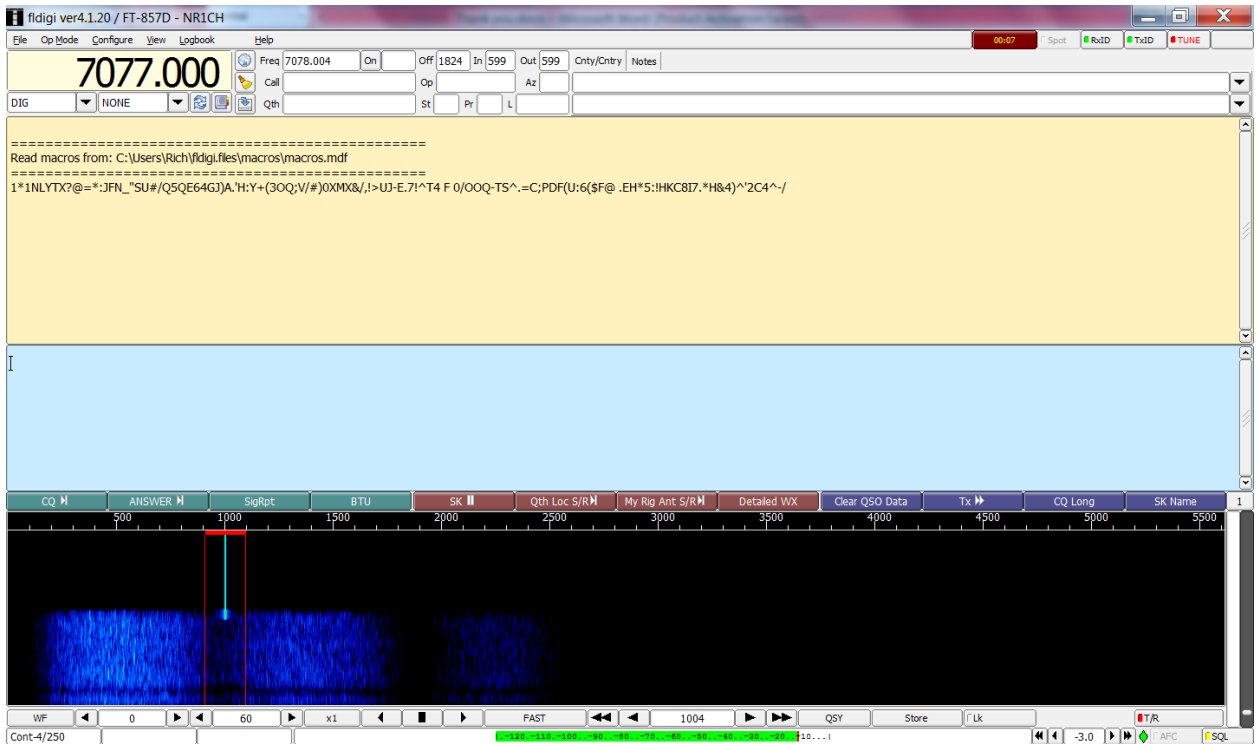


Screen shots FLDigi

Normal receiving:



Sending Tune:



When sending a Tune the radio goes into TX mode, the fan starts up but not RF signal is actually generated. I know this because when I use the mic on the radio to transmit in AM mode the external tuner shows RF going out via the LED lights on its front panel. That doesn't happen with FLDigi tune.