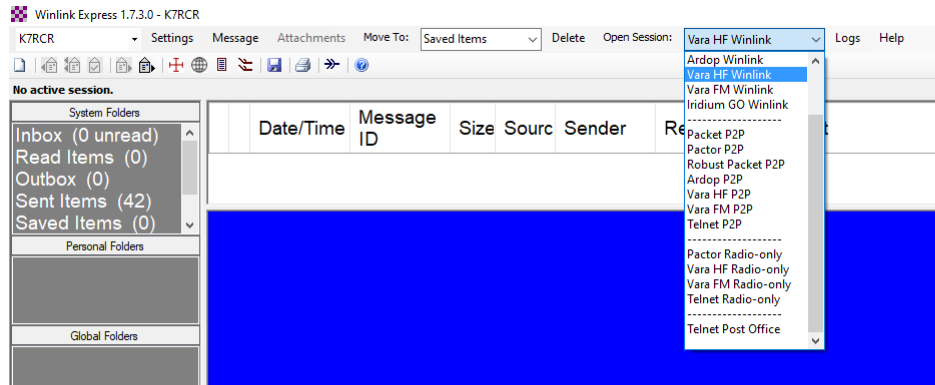


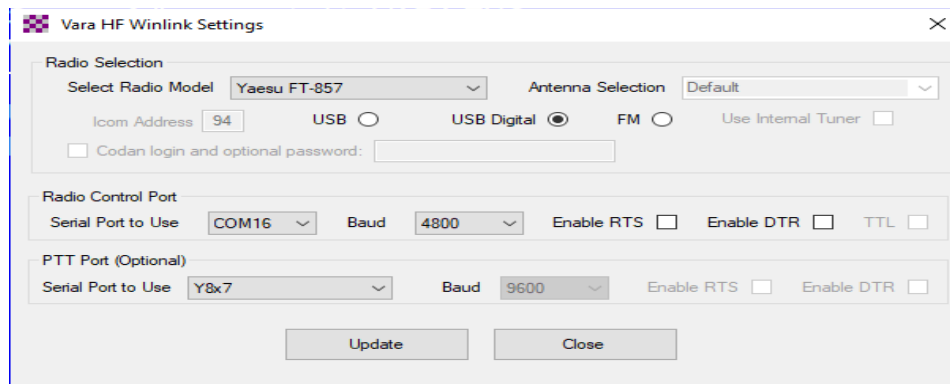
# DIGIRIG SETUP FOR USE WITH YAESU FT-857D & WINLINK USING CAT CONTROL

## FOR WINLINK HF

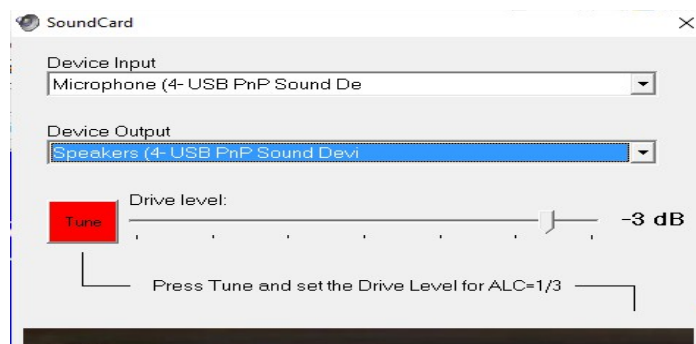
FROM THE MAIN WINLINK WINDOW SELECT VARA HF WINLINK THEN OPEN SESSION



AND FROM THE VARA HF WINLINK SESSION WINDOW SELECT SETTINGS. MAKE SURE YAESU FT-857 IS SELECTED AND THE CORRECT SERIAL PORT AND BAUD RATE ARE SELECTED. MAKE SURE ALSO THAT PTT PORT IS SET TO Y8x7. CLICK ON UPDATE AND CLOSE THE WINDOW.



NEXT, GO TO VARA HF, SELECT SETTINGS AND VARA SETUP AND INSURE YOUR DESIRED SETTINGS ARE CORRECT. AGAIN SELECT SETTINGS AND SOUND CARD AND INSURE YOU HAVE THE RIGHT DEVICES SELECTED.

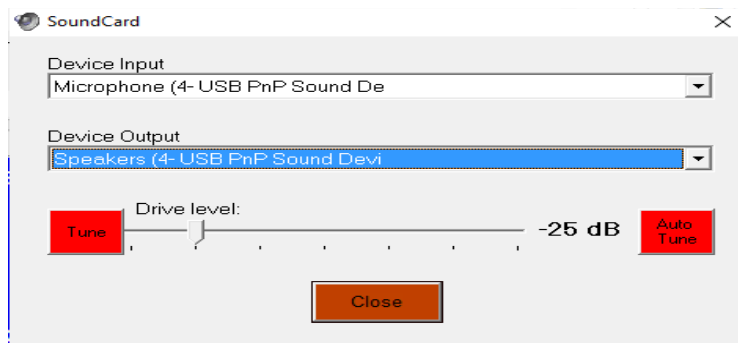


## FOR WINLINK VHF

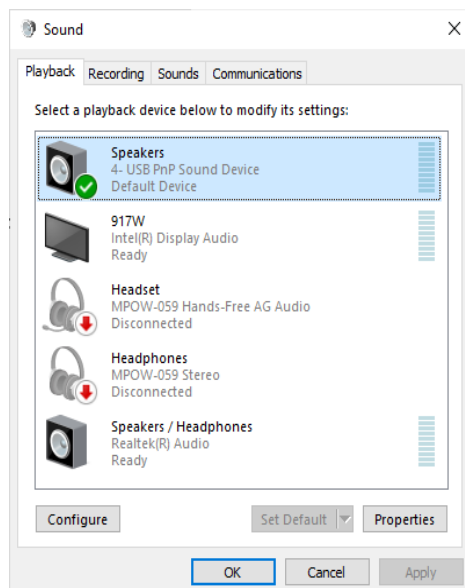
SET FT 857 MODE TO **PKT**

FROM THE MAIN WINLINK WINDOW SELECT **VARA FM WINLINK** THEN **OPEN SESSION**

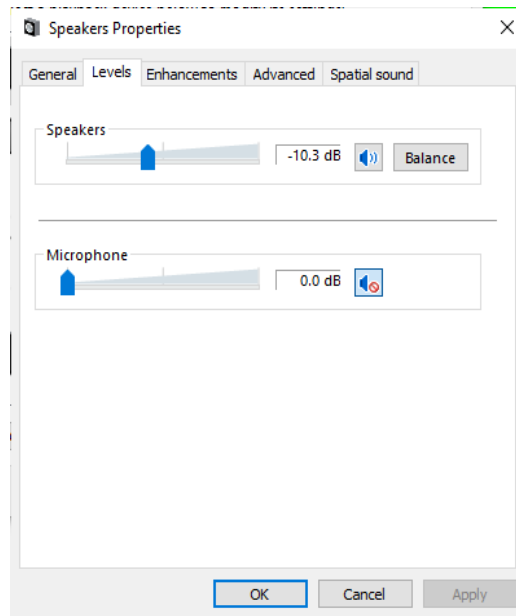
GO TO **VARA FM – SETTINGS – VARA SETUP** AND INSURE YOUR DESIRED SETTINGS ARE CORRECT. AGAIN SELECT **SETTINGS** AND **SOUND CARD** AND INSURE YOU HAVE THE RIGHT DEVICES SELECTED.



BE SURE TO CHECK YOUR SOUND DEVICE SETTINGS BY CLICKING ON **AUTO TUNE**. IF ADJUSTMENT IS NEEDED YOU WILL SEE THE FOLLOWING:

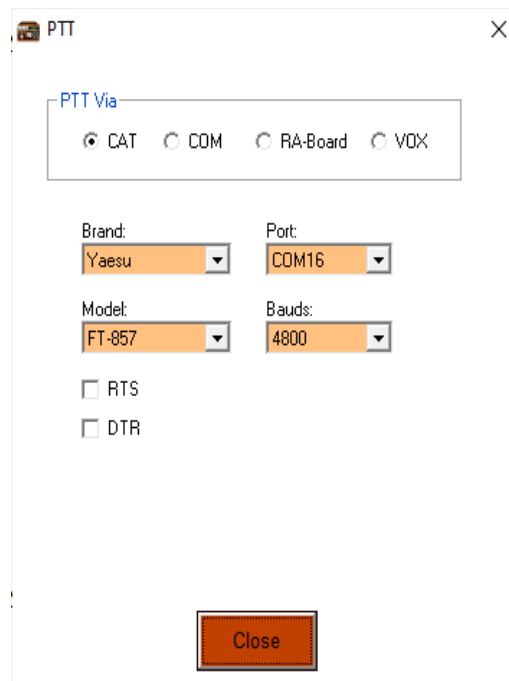


CLICK ON THE CORRECT SOUND DEVICE (IN THIS CASE 4-USB PnP SOUND DEVICE) AND THEN **LEVELS** AND ADJUST THE **SPEAKERS PROPERTIES** SLIDER AS NEEDED:



KEEP DOING THIS THIS UNTIL YOU GET THE BIG APPROVED MESSAGE.

GO TO **SETTINGS** – **PTT**. INSURE PTT VIA **CAT** IS SELECTED AND THE SETTING ARE CORRECT FOR YOUR SETUP.



THESE ARE ALL THE SETTINGS THAT SHOULD NEED TO BE MADE. PLEASE NOTE THIS IS A SETUP THAT WORKS FOR ME USING WIN 10. I HAVE NO IDEA IF IT WILL WORK FOR APPLE OR LINUX AND I HAVE NO IDEA IF IT WILL WORK FOR YOU, BUT AT LEAST IT'S A PLACE TO START. I AM GOING TO GUESS IT SHOULD WORK FOR ANY YAESU 8x7 RADIO. GOOD LUCK.

73's  
RICK, K7RCR