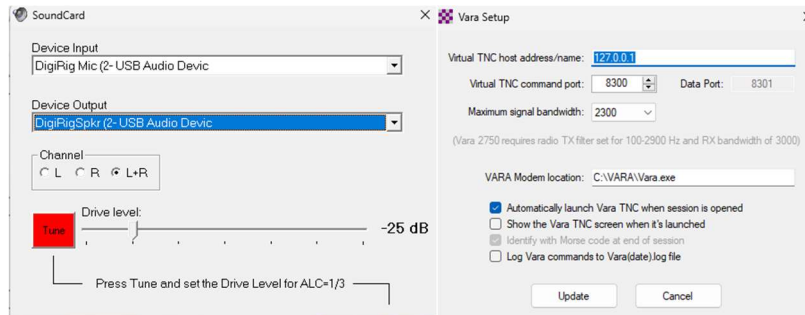


Settings for Elecraft KX2 and Winlink/RMS express
Mark Dallner, ac9de@arrl.org First Draft. 10/20/2024

This document contains my settings for using an Elecraft KX2, KXPA100 & DigiRig. The computer I am using is a BeeLink MINI S running Windows 11 Pro. These are inexpensive NUCs that I found on Amazon.

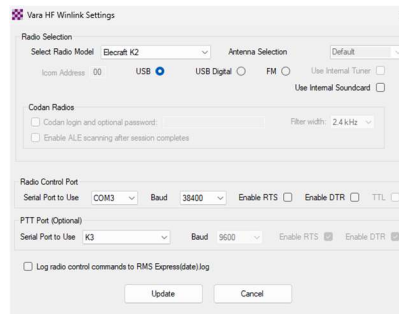
Look for “Setting Elecraft transceivers for sound card digital” by Don Wilhelm W3FPR. Those are the settings I use on my KX2 for Winlink/RMS express.

These are my settings for VARA HF setup/sound card. The drive level is what works for me. You will see my settings for the computer sound control panel in the following pages. The drive level setting works/interacts with the computer sound settings. Your mileage will probably vary.



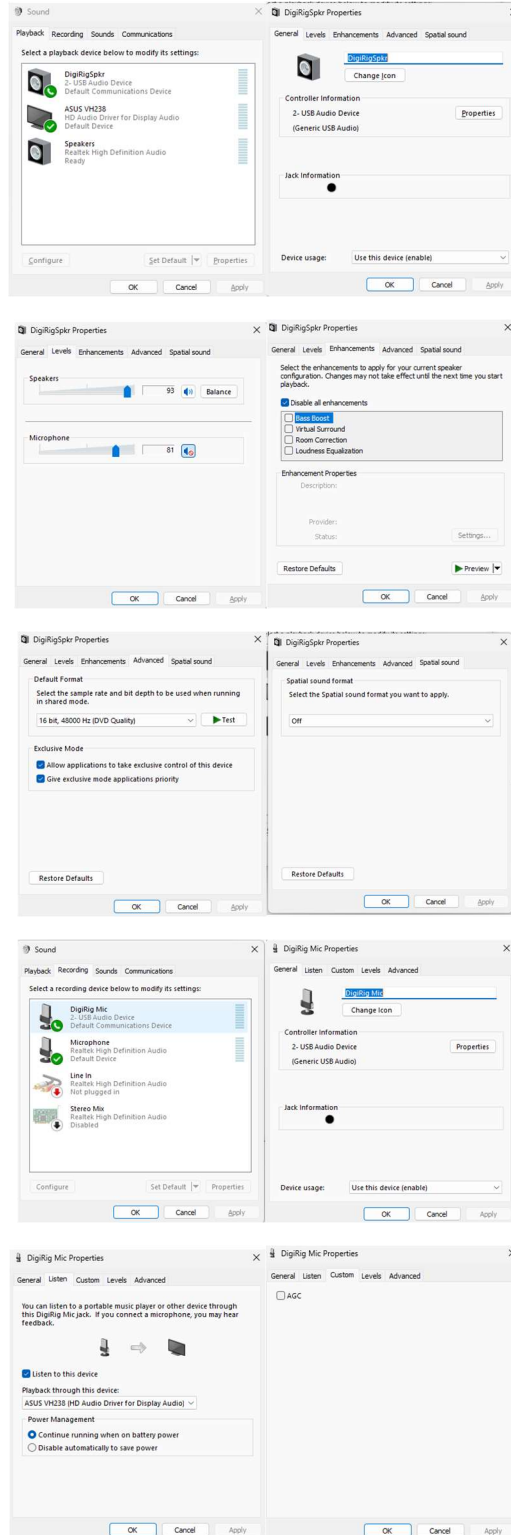
This is the radio setup screen in VARA HF session. Notice that USB is selected. Not USB Digital. Initially, I was selecting USB Digital and the output was distorted. I found this out when I monitored the output on my FT-891. When using USB the sound output was undistorted.

The drive level is supposed to be 1/3 deflection on your radio. I haven't figured out why I am having a hard time enabling the metering. Another challenge I figure out



The following screen shots are the sound setting. Type Run, mmsys.mpl is how I got to the previous version, (Windows 10?,) of sound control panel.

Settings for Elecraft KX2 and Winlink/RMS express
Mark Dallner, ac9de@arrl.org First Draft. 10/20/2024



I enabled "Listen to this device". Need to be able to hear the signal in and out.

Settings for Elecraft KX2 and Winlink/RMS express

Mark Dallner, ac9de@arrl.org First Draft. 10/20/2024

